

# SRG1VCU

Type 2 & 3 Surge Protector  
for domestic consumer unit applications

The Lewden range of circuit protection devices are designed and tested for use with Lewden branded distribution boards.

SRG1VCU is a single phase surge arrester suitable for use in TN-C / TN-S / TT network systems. It is designed for universal application, for the protection of electrical appliances against impulse surge effects when connected to LV supply systems.

These devices are earth leakage free and may be connected before or after RCCB / RCBO circuit protection .

Technical Data	
Reference standard	IEC/ EN61643-11
Test class according to EN61643-11	Type 2 & 3
Nominal Voltage (Un)	230-240V ac
Max continuous operating voltage (Uc)	275V ac
Nominal discharge current (In) (8/20)	3kA (L/N, L/PE) 5kA (N/PE)
Combined impulse (Uoc)	6kV (L/N, L/PE) 10kV (N/PE)
Voltage protection level at Uoc (Up)	<1kV (L/N) <1.2kV (L/PE) <1.2kV (N/PE)
Temporary overvoltage (TOV)	335V/5S (L/N) 1200V+Uo/ 0.2S (L/PE)
Response time	<25nS (L/N) <100nS (L/PE, N/PE)
Power loss at winding temp 20°C	<0.5W
Maximum backup fuse	32A gL/gG
Recommended backup fuse / MCB	Single pole 16A B or C 6kA
Lifetime	Min 100,000h
Min-Max conductor size	2.5-4mm <sup>2</sup>
Cable connecting length max	300mm per lead
Terminal tightening torque	
Mounting	35mm din rail
Operating temperature range	-40° C to +70° C
Ingress protection rating	IP20
Weight	45g
Dimension	1x 18mm module

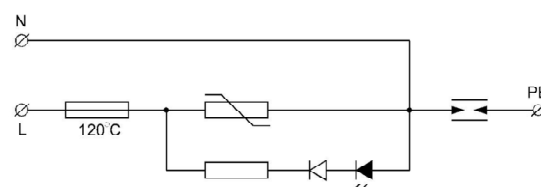
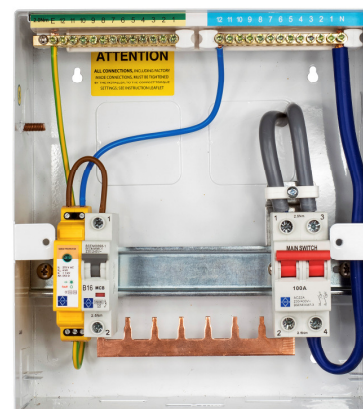
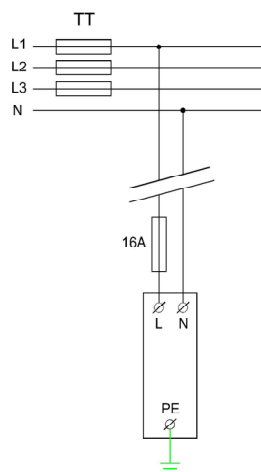
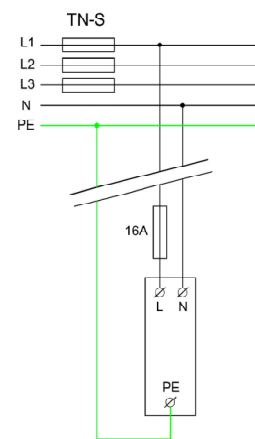
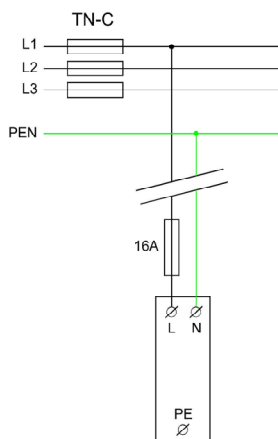
The device must be installed by a qualified electrician in accordance with the latest edition of the IET wiring regulations for electrical installations BS7671

For consumer unit installation, use in conjunction with Lewden MCB type B16 1P (Part number G06-1B16)

### Important:

When conducting insulation resistance tests on the installation, remove either the plug in cartridge, or the earth cable to the device. Alternatively conduct tests at reduced voltage (250VDC max) Failure to do so may cause irreparable damage to the surge arrester.

### Connection diagrams and typical installation set up



Green LED indicator	
ON	Healthy (ok)
OFF	Failure (replace)



THIS GUIDE MUST BE LEFT WITH THE UNIT FOR FUTURE REFERENCE

